

**Team work...  
makes the dream work**



**SIGMA  
KAPPA**  
LIMITED





## Our story

100% Greek product



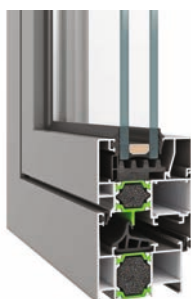
**Sigma Kappa Ltd** specializes in structural engineering consultancy and retail of high quality aluminium products, with a number of successful projects in Trinidad & Tobago and other Caribbean islands. Our vision is to provide products and services that exceeds the local standards and meet your expectations. Through our partnership with Pikrakis S.A., a vertical aluminium product manufacturing and coating plant with a strong international presence, we can provide high quality products with certifications such as Qualicoat Seaside Class, EN ISO 9001:2015 and CE.

## Certified quality

The coating plant has been certified for its production process according to the requirements of Qualicoat Seaside Class. Qualicoat is an International Quality Mark for Aluminum Coatings which are intended for Architectural Applications. Moreover, the Seaside Class mark means that the coating plant is able to apply special treatments before coating the product, to ensure higher corrosion resistance. This pretreatment is recommended for environments that are especially affected by pollutants or are located close to the sea. The company implements a Quality Management System according to EN ISO 9001:2015, Factory Production Control (FPC) and markets CE marked frames.



# Window/Door System



## Sliding Systems

A true achievement of design in sliding systems. The contemporary lines, the smooth and quiet operation of the sliding system, make it a favourite amongst architects and home owners. This system offers maximum security with the use of multiple locks (optional).

## Opening Systems

Tilt & Turn Opening Systems for affordable quality and compatibility. This system is one of the most flexible and financially affordable systems in the market. It responds amazingly well to any type of structure as it enables the application of a wide range of numerous mechanisms. It offers a wide variety of design options in both straight lines as well as in curved lines for the absolutely classic style lovers.

## Bi-folding Systems

Tilt & Turn Opening Systems for affordable quality and compatibility. This system is one of the most flexible and financially affordable systems in the market. It responds amazingly well to any type of structure as it enables the application of a wide range of numerous mechanisms. It offers a wide variety of design options in both straight lines as well as in curved lines for the absolutely classic style lovers.

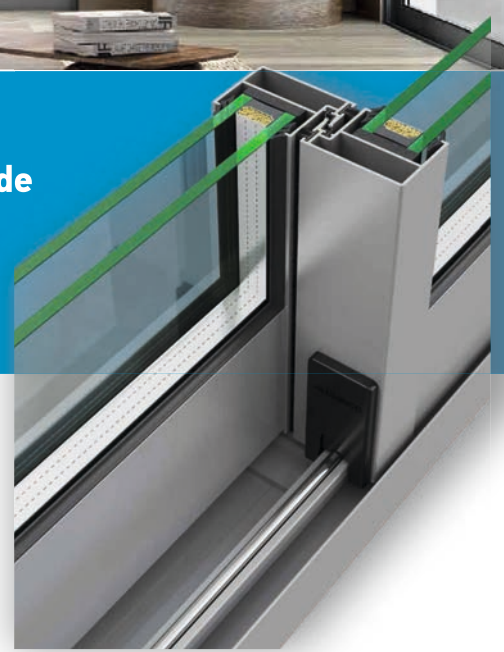
## Thermal Insulating Systems

We can offer the option of thermal insulation for the systems above by the use of polyamides. A polymer inserted into the profiles that works as thermal break, creating an exceptional energy efficient system.



# GP320

Sliding-lift and slide non-insulated new generation system.



#### HARDWARE

SLIDING	•
LIFT & SLIDE	•

#### SYSTEM PROFILE DIMENSIONS

FRAME LIFT & SLIDE WIDTH mm	86
MIN. FRAME HEIGHT mm	30
MIN. FACE HEIGHT mm	97.5
GLASS THICKNESS mm	24
SASH WIDTH mm	32
SASH HEIGHT mm	76
INTERLOCKING PROFILE WIDTH mm	30

#### CONSTRUCTION DIMENSIONS

SASH WIDTH mm	330-2000
SASH HEIGHT mm	520-2800
MAX. SASH DIMENSIONS mm (WxH)	2000x2400 / 1700x2800
MAX. SASH WEIGHT Kg	120 / 200*

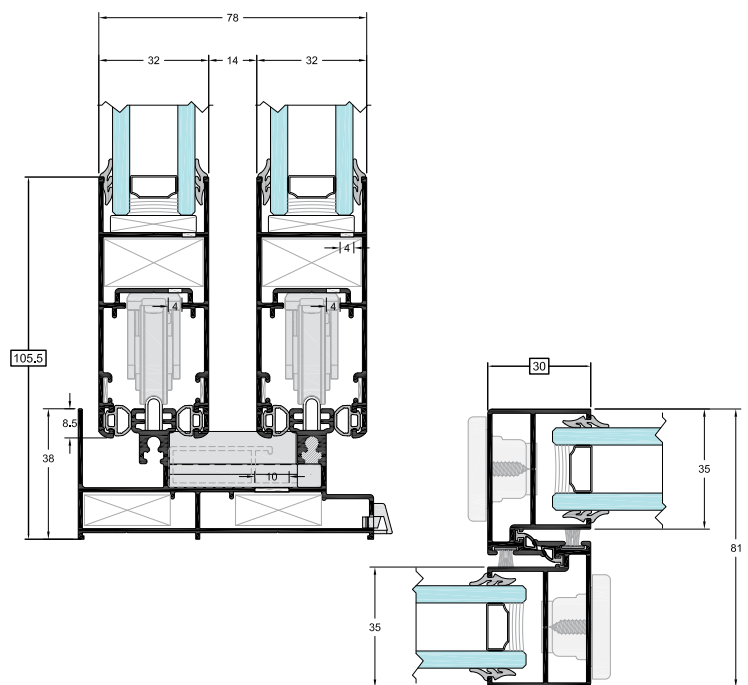
\*Lift and slide mechanism

#### CONFIGURATIONS

Sliding: 2Leaf sliding, 3Leaf sliding, 4Leaf double sliding, 6Leaf double sliding, 2Leaf sliding with insect screen

Sliding in wall: 1leaf-2leaf glazing, 1leaf-2leaf glazing/mosquito screen, 1leaf-2leaf glazing/ shutter, 1leaf-2leaf glazing/mosquito screen/shutter.

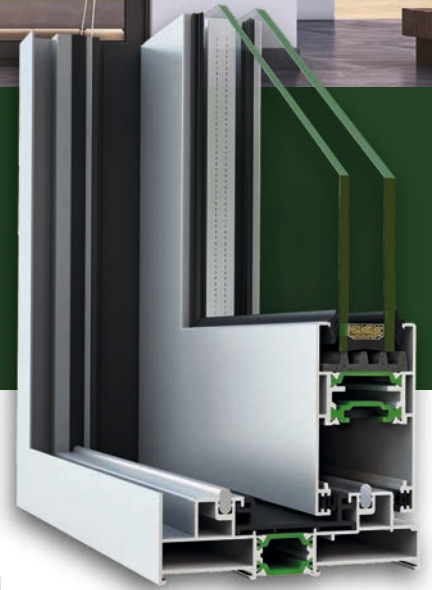
Combinations: 2Leaf sliding SL320 with opening W540, 2Leaf sliding with mosquito screen SL320 with opening W540, 3Leaf sliding SL320 with opening W540.





# GP2450

**Sliding Thermal Insulating System**  
with minimal face widths



HARDWARE	
SLIDING	•
LIFT & SLIDE	•

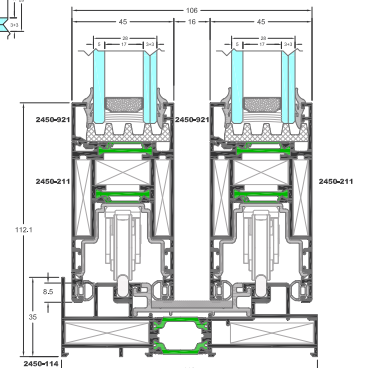
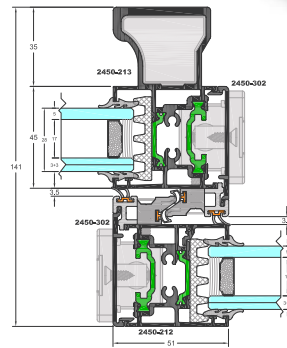
<b>POLYAMIDES mm</b>	16-32
----------------------	-------

SYSTEM PROFILE DIMENSIONS	
FRAME LIFT & SLIDE WIDTH mm	113
MIN. FRAME HEIGHT mm	35
MIN. FACE HEIGHT mm	112.1
MIN. WIDTH OF HOOK (MIDDLE SECTION):	51
GLASS THICKNESS mm	26-28

CONSTRUCTION DIMENSIONS	
SASH WIDTH mm	330*-2000
SASH HEIGHT mm	1200-2700
MAX. SASH DIMENSIONS mm (WxH)	2300x2400 / 1600x2700
MAX. SASH WEIGHT mm Kgr	200-250*

CERTIFICATES/PERFORMANCES	
AIR PERMEABILITY EN 12207	Class 4
WATER TIGHTNESS EN 12208	Class 4B
RESISTANCE TO WIND LOAD EN 12210	Class C4
BURGLAR RESISTANCE	N/A
SOUND REDUCTION R <sub>w</sub> EN 140-3	N/A
THERMAL INSULATION U <sub>f</sub> ISO 10077-2	U <sub>f</sub> =3.1-5.3 W/m <sup>2</sup> K

\*Mechanism 250 Kgr EXM



## Thermal Insulation Coefficient

**U<sub>w</sub> = 1.59 W/m<sup>2</sup>K**

The coefficient of thermal insulation has been calculated for construction:  
4500x2500 with U<sub>f</sub>=1.1 W/m<sup>2</sup>K  
Τύπος τζαμιού: 3+3 / 16 (ARGON) / 5



# GP540

**Tilt & Turn System**  
for affordable quality and compatibility.



## HARDWARE

CAMERA	CE	ALU 16
--------	----	--------

## SYSTEM PROFILE DIMENSIONS

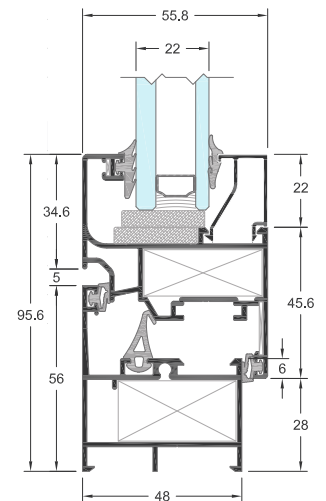
MIN. FRAME DEPTH mm	48	55.8
MIN. FACE HEIGHT mm	95.6	102.9
GLASS THICKNESS mm	4-32	

## CONSTRUCTION DIMENSIONS

SASH WIDTH mm	365-1600	360-1490
SASH HEIGHT mm	360-2400	450-2360
MAX. SASH DIMENSIONS mm (WxH)	1600x2100 / 1300x2400	1490x2100 / 1300x2360
MAX. SASH WEIGHT mm Kgr	130, 150*, 200**	130, 150*, 200**

## CERTIFICATES/PERFORMANCES

AIR PERMEABILITY EN 12207	Class 3	Class 4
WATER TIGHTNESS EN 12208	E750	Class 8A
RESISTANCE TO WIND LOAD EN 12210	Class C5	Class C4
BURGLAR RESISTANCE	RC2/RC2N	N/A
SOUND REDUCTION R <sub>w</sub> EN 140-3	N/A	N/A
THERMAL INSULATION U <sub>f</sub> EN ISO 10077-2	N/A	N/A





# GP460

## Folding Door System

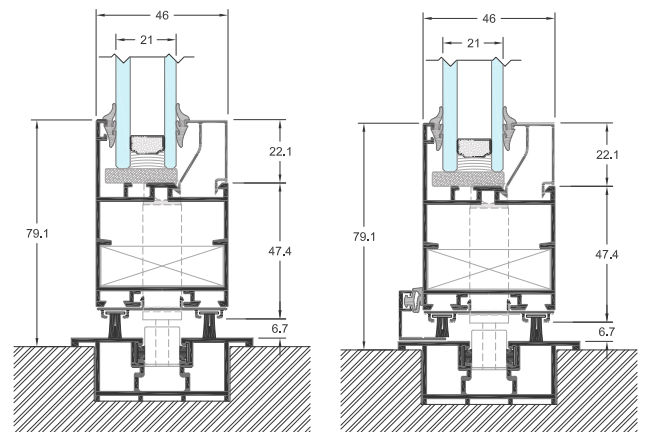
for a wide variety of solutions of unrivaled functionality.

### SYSTEM PROFILE DIMENSIONS

MIN. RAIL WIDTH mm	54.5
MIN. FRAME HEIGHT mm	45.4
MIN. FACE HEIGHT mm	79.1
GLASS THICKNESS mm	4-31

### CONSTRUCTION DIMENSIONS

SASH WIDTH mm	350-800
SASH HEIGHT mm	600-2300
MAX. SASH DIMENSIONS mm (WxH)	700x2300
MAX. SASH WEIGHT Kgr	100



### System Identity

FD460 is the non-thermal insulating system for folding doors, the ideal solution for wide spans, providing excellent sealing and connecting harmoniously the interior with the exterior environment.

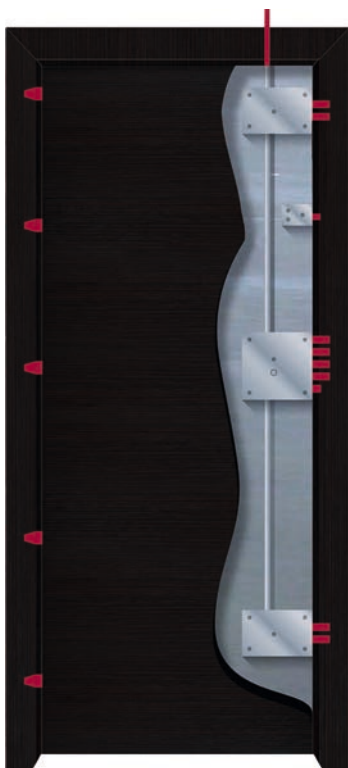
### Features & Benefits

- Hanging on top guide using a special roller-hinge, able to support 200 Kgr (100 Kgr per sash).
- Sealing with both EPDM gaskets and high-density brushes.
- Low threshold for comfortable access and passage.
- Possibility of locking door construction, opening inwards.

### Configurations

**Folding:** 3Leaf, 5Leaf, 7Leaf





### Characteristics

- Double armored door leaf made of electro galvanized metal sheet.
- Frame with embedded false frame electrostatic painted in RAL 9005 black anti-scratch.
- Perimeter profiles made of galvanized PVC coated metal sheet, anti-scratch in RAL 9005 black.
- Heavy type adjustable hinges.
- SECUREMME lock with retractable heart with 3 keys of four turns and one service key.
- Limiting opening device for controlled opening.
- Latch regulator.
- Panoramic door viewer 180°.
- Automatic Door Bottom Seal.
- Full perimeter rubber gasket for the frame.
- It can be dressed in wood veneer, PVC or Aluminum sheeting.

### Locking Points Titan 16

- 4 Central Security Bolts of the lock.
- 1 Latch Bolt
- 4 Side Moving Bolts.
- 1 Top Moving Bolt.
- 1 Limiting Opening Device Bolt.
- 5 Stable Security Bolts.



KT - 215



KT - 228



KT - 2233



PVC FLAT



KT - 268



KT - 2236



## Hotels Doors

Hotelln is a new line of fire resistant hotel doors. This new line is a representation of the technological developments that have always guided our company.



## Interior Doors

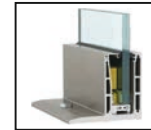
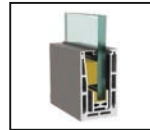
These laminated hollow-core doors combine two basic characteristics, the low price and the best quality of its proven durability. The two different frame types (rounded or straight form), combined with the large option of styles and colours will definitely fit your needs and aesthetics.





## Railing System Crystal Line

The Crystal Line system is an advanced supporting glass system based on aluminum profiles. It is the ideal system for glazed railings with high architectural standards. It offers an impressive aesthetic and functional result with no view limit. It is maintenance free and easy to clean.



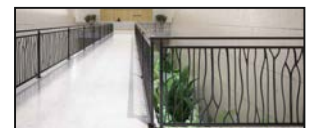
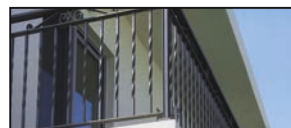
## Railing System F50

The F50 Railing System is based on an extremely simple design and constructional concept: a tubular system of anodized or polyester powder coated aluminum, which is elaborately bonded with connectors and supports creating a discrete, distinctive and high aesthetics result.



## Railing System Makriyianni

Aesthetics matter when it comes to railings. But it is not just about looks. Classic railings are a state-of-the-art solution combining high safety standards. Made of durable aluminium, the railing structure is based on specially designed aluminium profiles.



# Pergolas



## Traditional or Modern design

The Aluminium Pergolas are coated with electrostatic paint in solid or wood colours, using a special Sea Side Class treatment for protection against salt environments. Various covering options such as polycarbonate, glass, cloth, fixed or movable louvers can create a traditional or a modern design.



## Nyfan Jumbo

The Pergola NYFAN Jumbo is a heavy duty movable ceiling system made of aluminum and PVC fabric for outdoor use. It is specially designed for Large Scale Constructions and Commercial Outdoor Spaces. It provides sun, wind, rain and partial snow protection. It can withstand wind forces up to 11 Beaufort.



## Nyfan Mustang

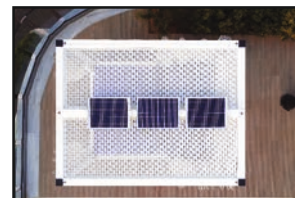
The Pergola NYFAN Mustang is produced with maximum length 6,5m. The retraction is made with an aluminum axle and an internal electric motor. It provides sun, wind, rain and partial snow protection.





## Skèpi

In this luxurious Daybed, the ceiling is fixed with a special design that allows the light to penetrate while the sunbather is protected from the sun.



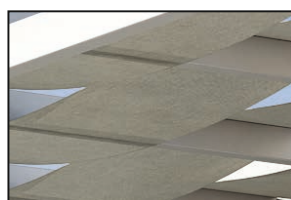
## Embrace

This Daybed Embraces your needs individually. Movable Ceiling Louvers with independent manual operation per user.



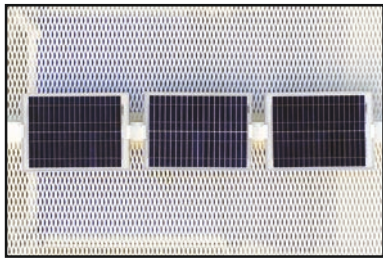
## Maisonette

In this Daybed the Wavy cloth on the roof, creates a unique yet intimate style.



# Optional Features

*«features» that upgrade the value of accommodation.*



### Solar Panels:

The solar panels provide sufficient power for features such as lighting and charging ports as well as an environmentally friendly character and complete freedom!



### Table / cup holder:

A special two-level sliding aluminium table at the center of the Daybed with a flat top and cup holders at its base.



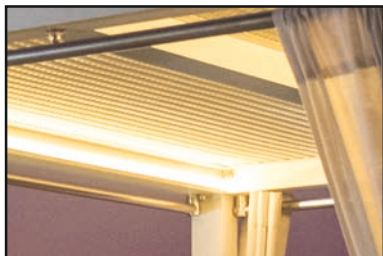
### USB ports (loading set) & Battery.

Two USB ports (normal and fast charging) with a protective cover. It allows you to charge your portable devices (tablets, mobile phones, mp3 players etc.) without having to leave them in the room.



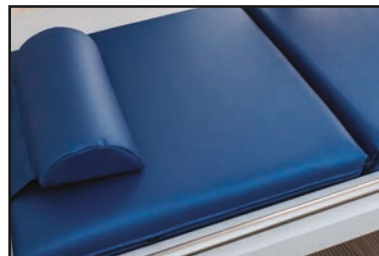
### Privacy:

The curtains of your choice, allow for the privacy and the sun protection that everyone needs!



### Special LED lighting:

LED lighting for moments of relaxation and fun after the sunset.



### Mattresses:

Fully customizable options (cloth material, colours, logos) in accordance with your needs.



### Safebox

Secure your personal belongings while you enjoy the pool or the sea.



### Coffee table

Aluminium coffee table. Ideal with the sunbeds Step-Up and Klim-max.  
Dimensions: 60x40x45

# Seabeds



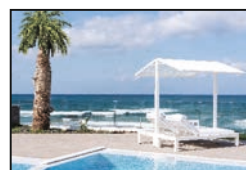
## Alpha

Elegant and robust construction. This Sunbed is Ideal for the beach and communal pools. Due to its simple design, many pieces can be laid out in rows allowing everyone to enjoy the view.



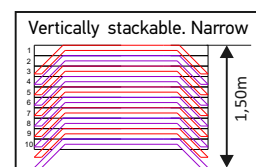
## Step up

Aluminium Sunbed. The robust lightweight and wide construction provides comfort and a sense of luxury to the user. Option of sliding side table and wheels. The no wheels version can be upgraded to the Alpha model!



## Klim-max

Aluminum sunbed comfortable for the user and practical for the owner! Maximize the utilization of your space with the narrow design (65 cm width) and the stackable capability.





### **Sigma-Kappa Ltd**

12 Windsor Road, Valsayn North,  
Trinidad & Tobago, West Indies  
(868) 398-6163  
sigmakappaltd@gmail.com  
www.sigmakappaltd.com

PARTNERS

### **Pikrakis SA Aluminum Industry**

60, Manou Katraki str, Industrial Park of Foinikia, Iraklion, Crete,  
Greece P.C. 714 10, +30 2810 312270, +30 2810 310004

### **Lensyl Products Ltd**

Consol Drive, Western Industrial Estate,  
Churchill-Roosevelt Highway, Macoya,  
Trincity, Trinidad and Tobago, West Indies  
(868) 663-4000 Fax: (868) 663-1454